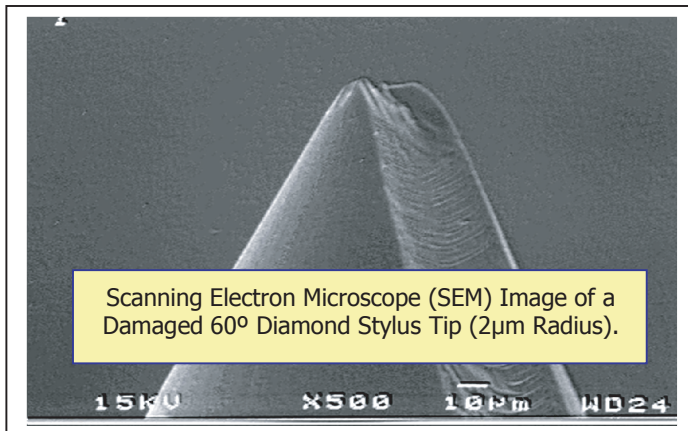


EMIchek Diamond or Ball Stylus Tip Check

EMIchek is a protruding edge specimen required for the checking of **Diamond** stylus tips for surface analyzing instruments. The specimen allows the user to quickly check for stylus tip condition.

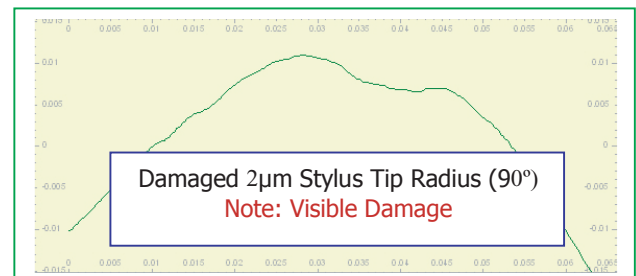
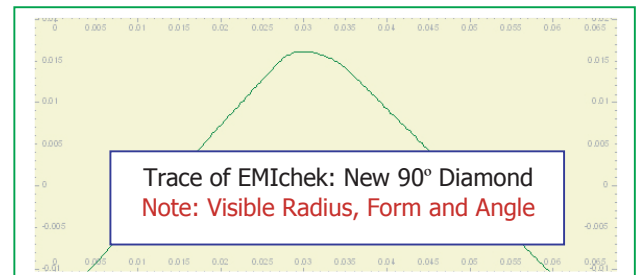
EMIchek-B is a protruding edge specimen required for the checking of **Ball** stylus tips for form analyzing instruments. The specimen allows the user to quickly check for wear or damage of the ball.



Scanning Electron Microscope (SEM) Image of a Damaged 60° Diamond Stylus Tip (2µm Radius).

Rapid Check of Stylus Tips
Radius, Angle and Form

Visual Representation of Tips
Check Diamond or Ball Tips



EMI GAGE
28W144 Industrial Ave Suite # 120
Lake Barrington, IL 60010-5939
Tel: (847) 277-7511 Fax: (847) 277-7911



EMI GAGE is an independent supplier of support and accessories for surface texture and roundness measuring instruments for use in automotive, aerospace, medical and related industries.